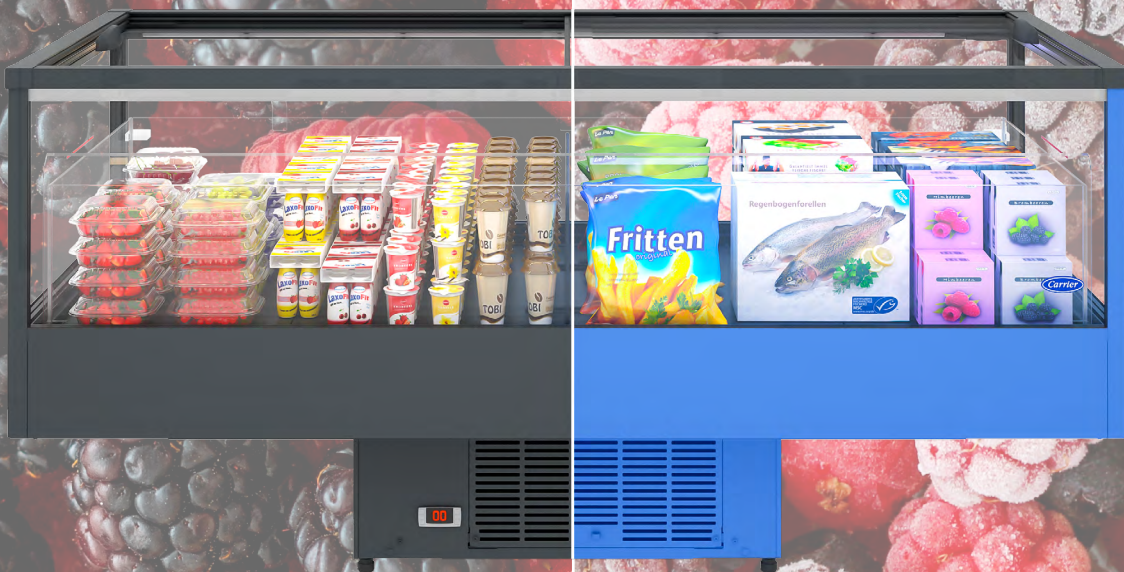




EasyCube switchable

Highly transparent
& energy efficient island
for promotional sales



Benefits at a glance

- Excellent energy efficiency
- Outstanding transparency with maximum product visibility
- Modern and lightweight look
- Optimized for improved life cycle

EasyCube switchable

Plug-in chiller & freezer island for promotional sales

Standard configuration

- Internal and external panels with galvanized steel with hard-wearing powder coated finish
- Easy-to-open sliding glass lids
- Triple insulated glass panels
- Electronic control with integrated temperature display
- Temperature forced air cooling
- Automatic defrost with drip water evaporation
- Natural refrigerant R290 (propane)
- Energy efficient fans

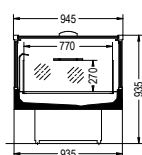
Customization

- Wooden cladding incl. stainless steel bumper (squared)
- Smart LED for handrail lighting
- Scanner price rail 40 mm
- Wire shelves, wire shelf steps and product dividers
- Plinth panel filter for extreme conditions
- Castors with brakes (factory installed)

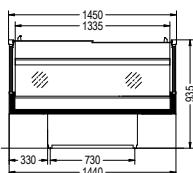


Optional wooden cladding incl. stainless steel bumper and castors with brakes

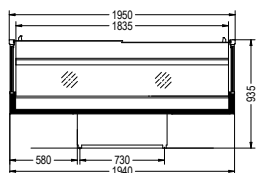
Basic models



EasyCube 50/80 G
(Side view)



EasyCube 1550/80 G
(Front view)



EasyCube 2050/80 G
(Front view)

EasyCube	15	50/80	G
Name of product line			
Cabinet width:			
15 = 1450 mm			
20 = 1950 mm			
Temperature class:			
5 = 3M1			
8 = 3L1			
Revision index: 0			
Version: G = Glass lids			

EasyCube switchable	Unit	1550/80 G	2050/80 G***
Temperature	[°C]	-1...+1 -22...-24	
Refrigerant		R290	
Width	[mm]	1450	1950
Depth	[mm]	945	
Height	[mm]	935	
Volume	[l]	280	380
Total display area	[m²]	2.01	2.62
Power consumption refrigeration			
Freezer mode	[W]	527	tbd
Chiller mode		732	tbd
Power consumption defrost			
Freezer mode	[W]	1054	tbd
Chiller mode		1016	tbd
Energy consumption			
Freezer mode	[kWh/d]	13.2	tbd
Chiller mode		6.8	tbd
Heat dispatch*			
Freezer mode	[W]	317	tbd
Chiller mode		163	tbd
Temperature class		3M1 / 3L1	
Energy label**			tbd
Application			

* At climate class 3 according to ISO 23953 | ** Label might change depending on configuration | *** Coming soon

Ref. No. PL-IS-020-EN-0522 | The manufacturer reserves the right to change the product specifications without notice. ©2022 Carrier. All Rights Reserved.



Carrier Commercial Refrigeration is a leading supplier of high-efficiency turnkey refrigeration systems and services in the food retail industry.

www.carrier-refrigeration.com

